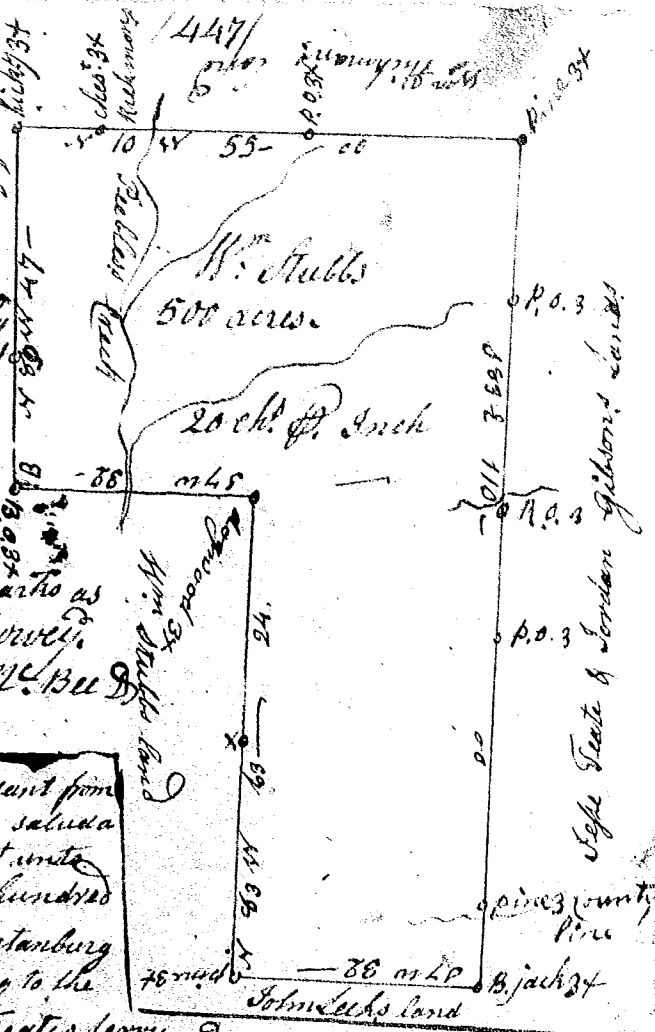


State of Carolina Pursuant
 to a warrant from John Thomas
 Comr. of Socy. & side salute, I
 have measured and laid out
 unto William Stubbs a tract
 of five hundred acres of land
 part in Spartanburg County
 & part in Union County in
 Pinkney District, bounded E
 by John Leek's land N by
 Sage Tates & Jordan Gibsons
 land, W by William Wickmans
 land, S by his own land & John M. Bee
 lands, and hath such shape & marks as
 the above plat represents. Surveyed
 21st August 1798. — Vardry M. Bee
 Recorded 14th Sept^r 1798. —



State of Carolina Pursuant to a warrant from
 John Thomas Comr. of Socy. & side salute
 I have measured and laid out unto
 John Sarratt set. a tract of three hundred
 & eighty one acres of land in Spartanburg
 County on the wagon Road leading to the
 Cherokee ford on broad river & to Teates ferry and
 a road to grindels shale, bounded S by Charles
 Morgans land, N by John Corpans
 land W by Thomas Coles land E by Mad
 Philips land, and hath such shape
 and marks as the above plat
 represents. Surveyed 19th July 1798
 Recorded 14th Sept^r 1798. Vardry M. Bee
 Done

